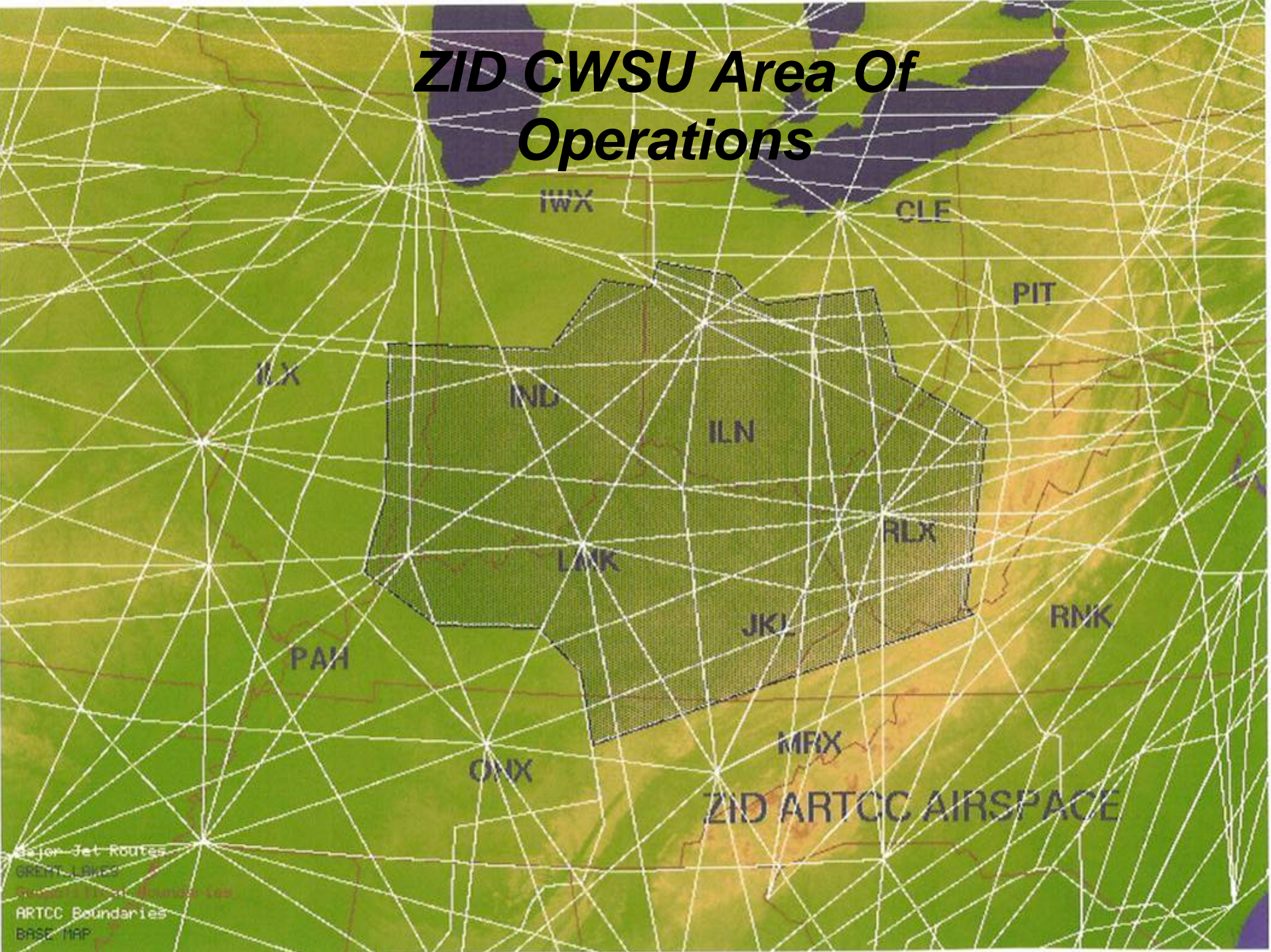


Indianapolis Center Weather Service Unit

*-assisting the FAA with strategic
and tactical decision making, providing
hazardous aviation weather
advisories/forecasts and acting as liaison
between the FAA and NWS operational
community*

ZID CWSU Area Of Operations



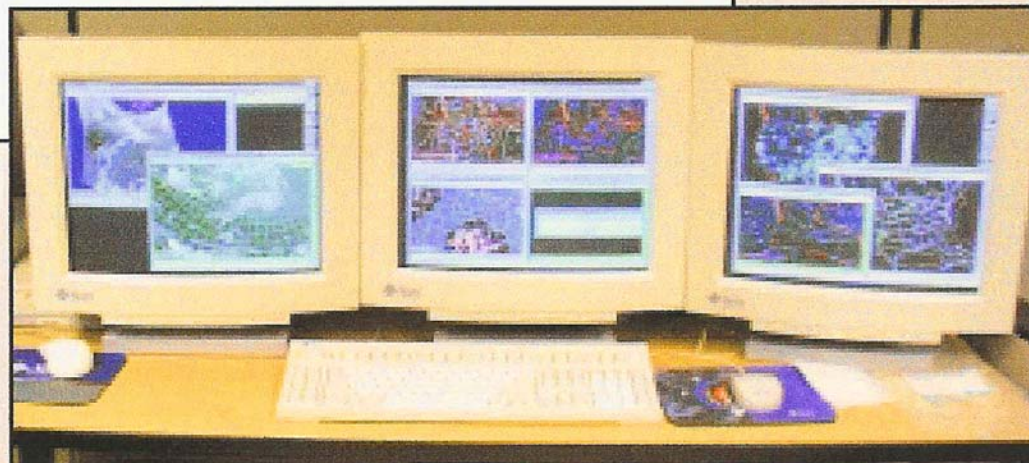
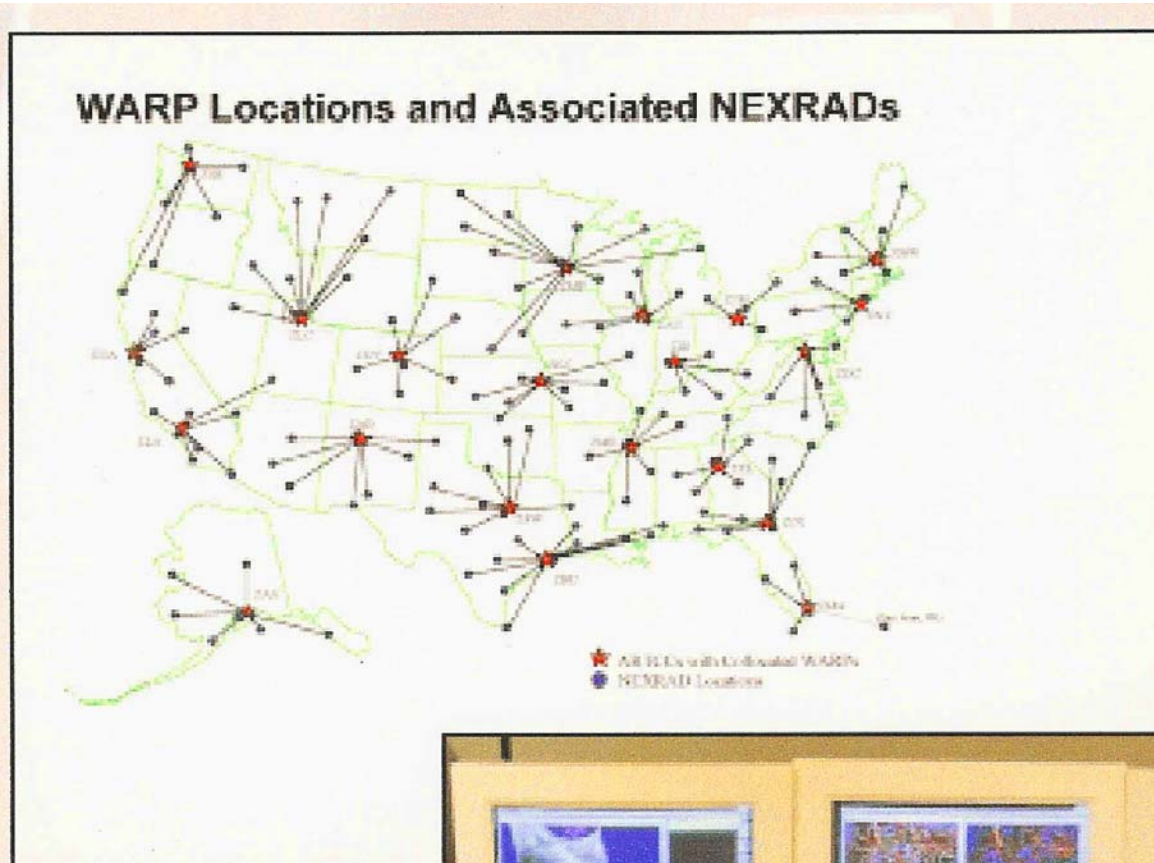
Major Jet Routes
GREAT LAKES
ARTCC Boundaries
BASE MAP

CWSU Operations Area

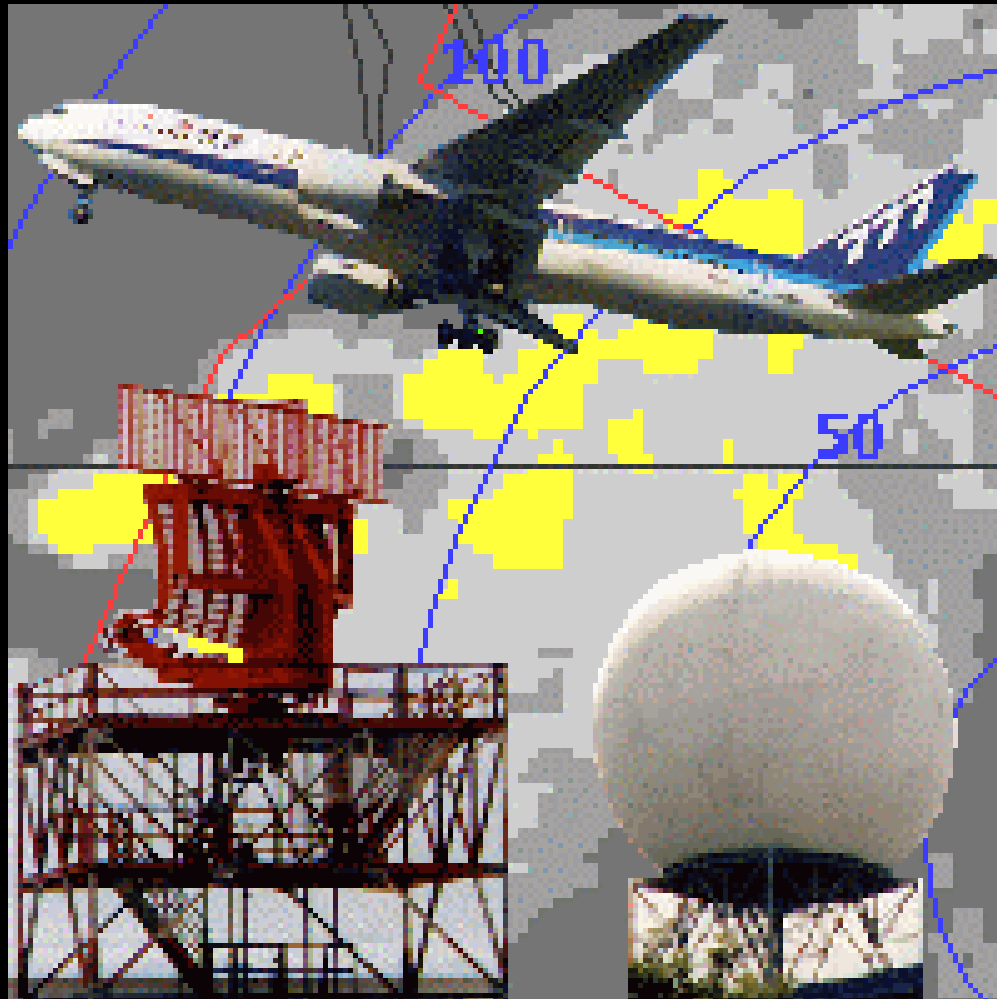


Weather and Radar Processor

a.k.a. WARP



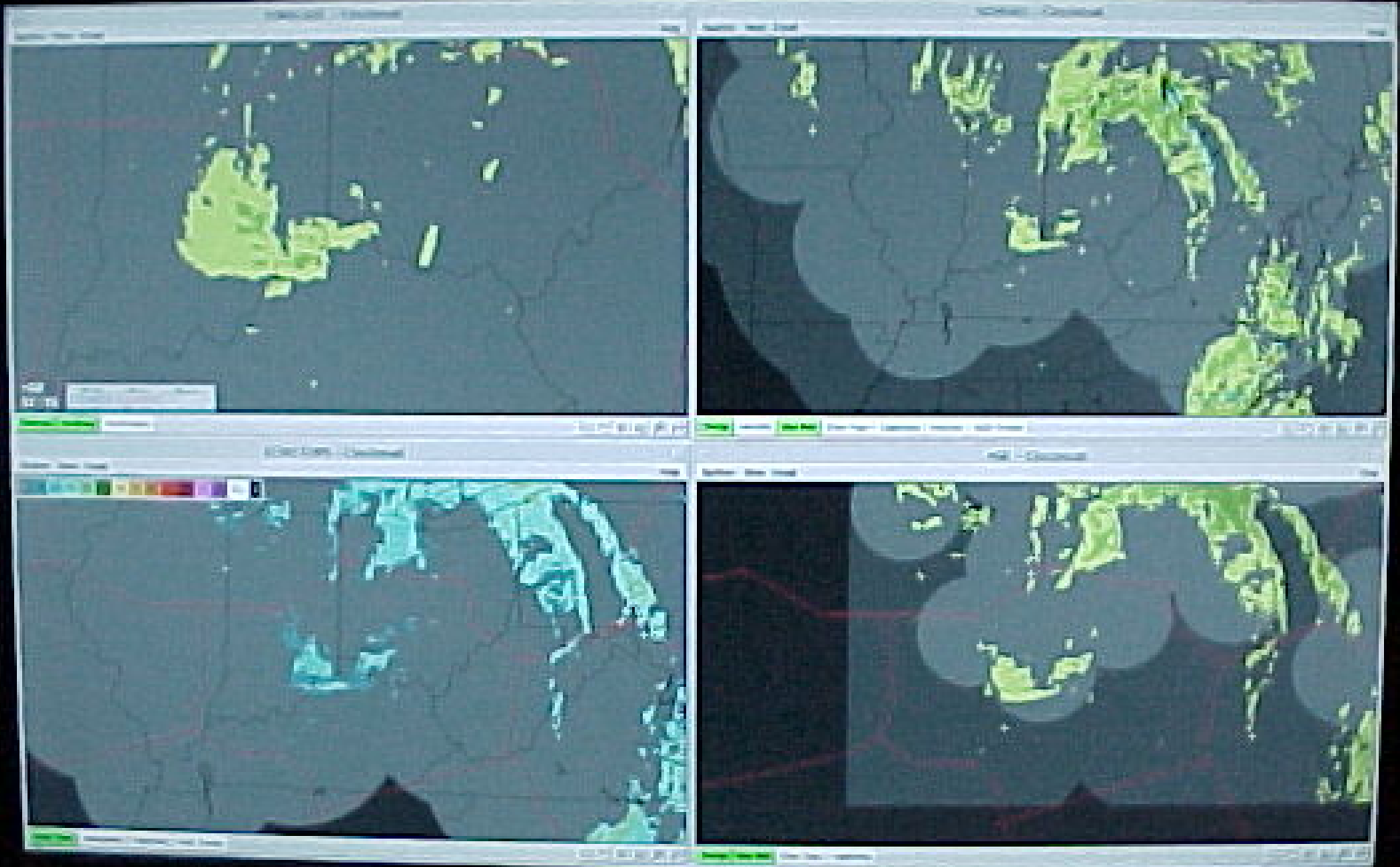
Corridor Integrated Weather System



CIWS

History/Forecast

Storm Motion/LTG/Satellite



Echo Tops/Growth/Decay

ASR Display

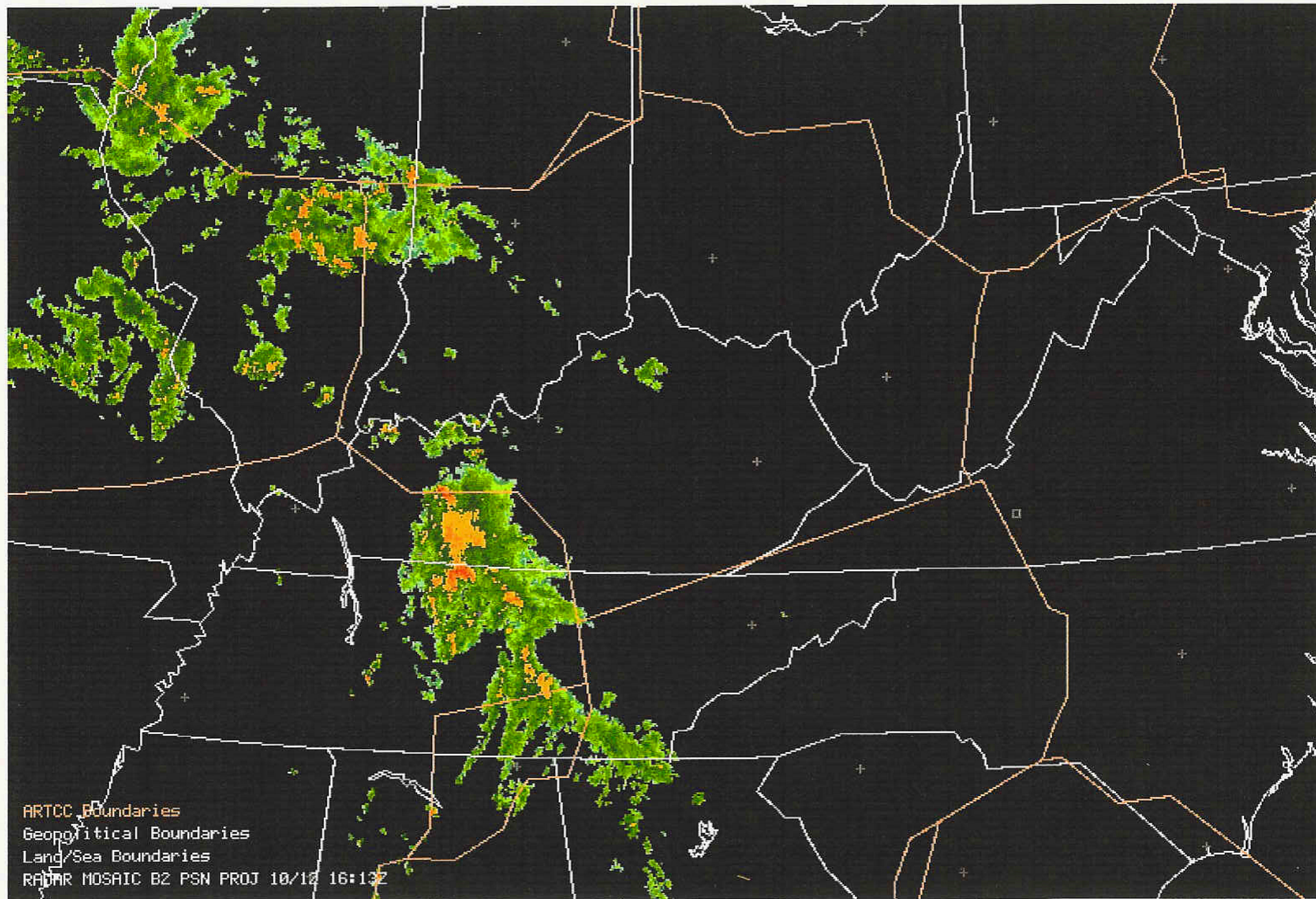
WARP Generated Weather Data on ARTCC Controller Display



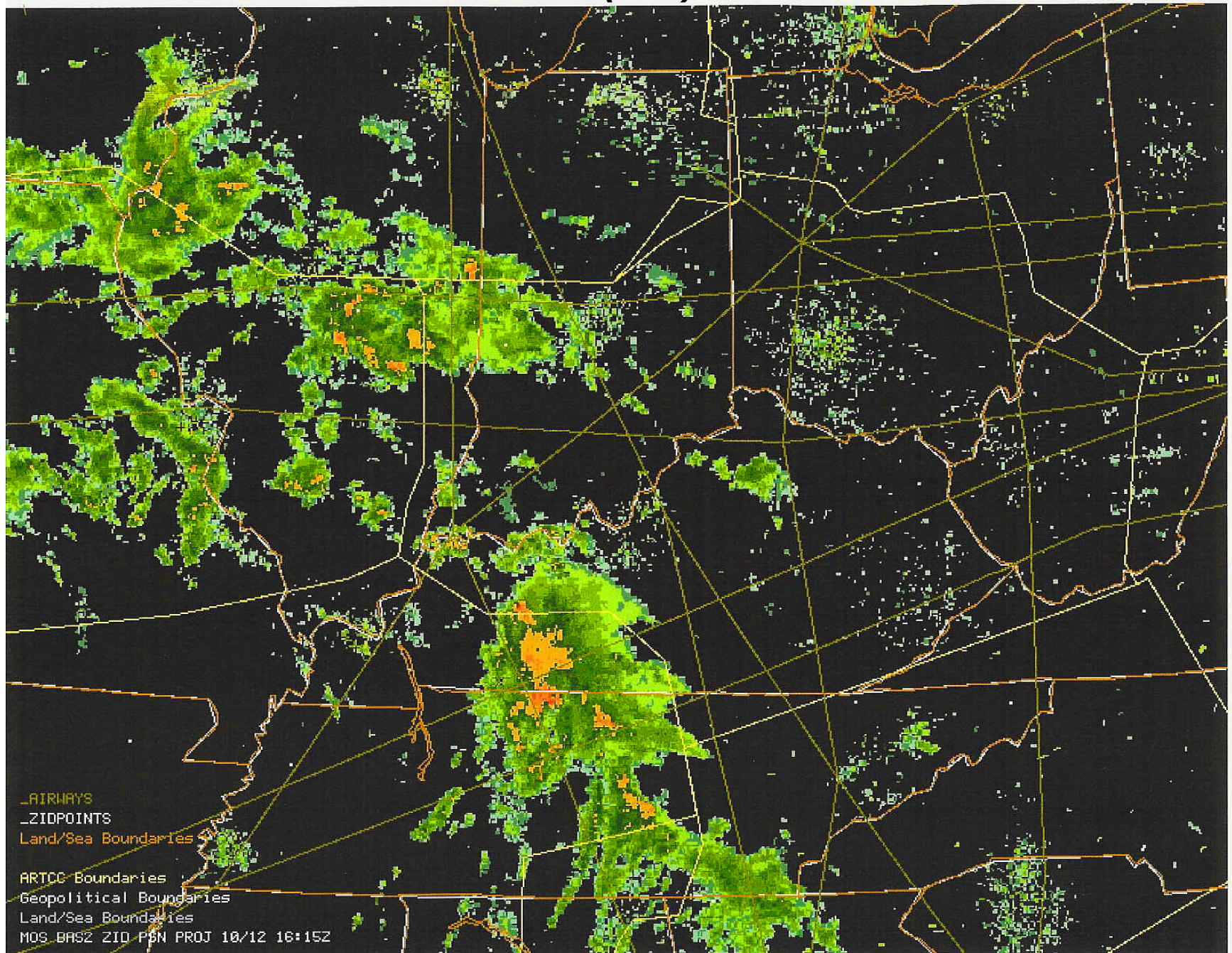
The NEXRAD Display on the DSR

- Composite Reflectivity Mosaics
 - Four Layers
 - 0-24,000 ft
 - 24,000 – 33,000 ft
 - 33,000 – 60,000 ft
 - 0 – 60,000 ft
- Three Colors
 - 30-40 dBZ Royal Blue (moderate weather)
 - 40-50 dBZ Checkered Cyan (heavy weather)
 - > 50 dBZ Cyan (heavy weather)
- Light Precipitation (< 30 dBZ) not shown

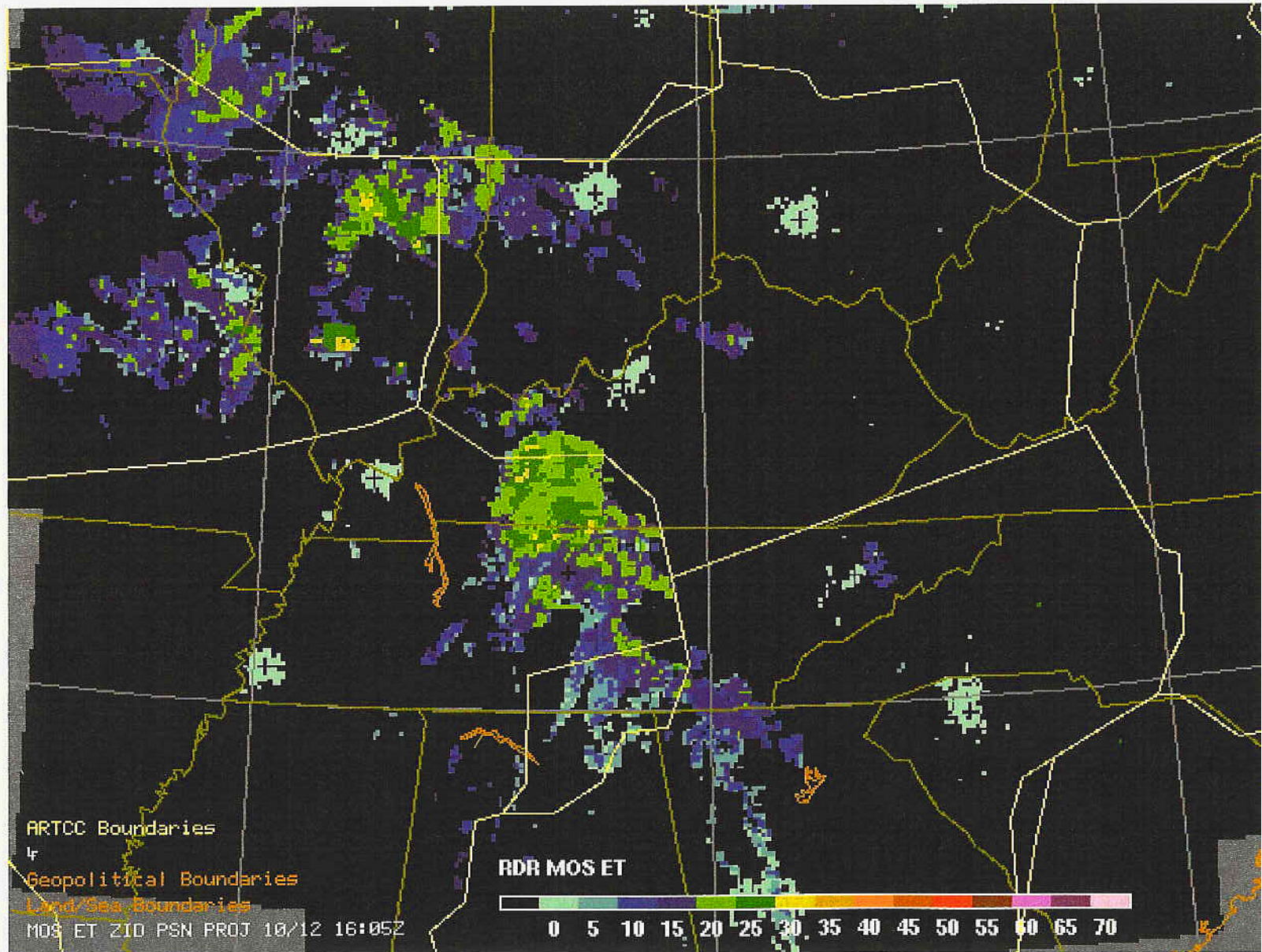
Unisys Filtered (BR) Radar Mosaic

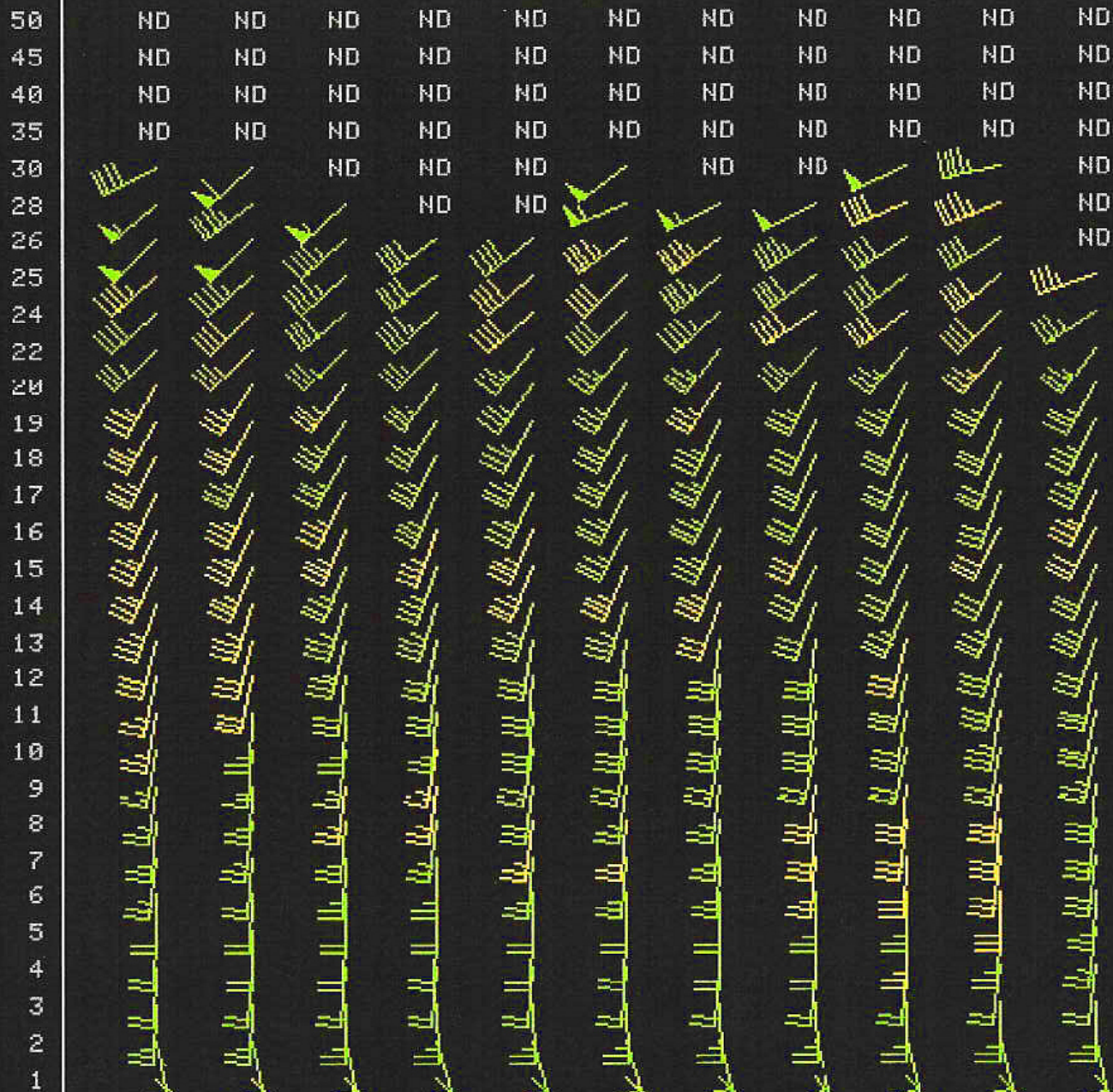


Unfiltered WARP (BR) Radar Mosaic



Echo Tops Mosaic





5 KNOT RES
(UWP / 48)

SITE: OHX
D/T: 10/12/04 1614Z
MODE: PRECIPITATION
UCP: 21

UNITS: KNOTS RMS



MAX SPEED: 35 KTS
DIR: 250 DEG
ALT: 25.00 KFT

TIME 1507 1513 1519 1524 1530 1536 1542 1548 1553 1559 1606