

# Instructions for Providing Radar Backup

*Intended for backup situations (routine or emergency), of another WFO that has a failure, and the WFO is still on the AWIPS WAN, but are unable to obtain or transmit their own radar data for central collection and distribution via the SBN.*

Reference: [AWIPS Manual](#) Section 7.8



# General Information on Providing True Radar Backup

A WAN Dedicated connection can be used to connect to a WFO's primary/secondary backup office radars (using Line 29), to provide sending and receiving of radar products in backup situations when a WFO is unable to do so. The requested site's RPG and AWIPS WAN must be operational.

When using the RadarServer Configuration on Line 29, products will be requested using an RPS list (primary/secondary backup radar) or by the default RPS list (KXXX) if a backup site's RPS list is unavailable for a specified VCP mode

- Sites can make copies of their current RPS lists and rename them for their primary/backup radars if they do not wish to use the default list
  - Items on the National List should not be duplicated on the local list
- Prior to AWIPS Build 21.4.1 the RPS list is limited to 65 products
- After AWIPS Build 21.4.1 the RPS list expands to 300 products
- [AWIPS RPS List Guidance](#)



# Caution Ahead!

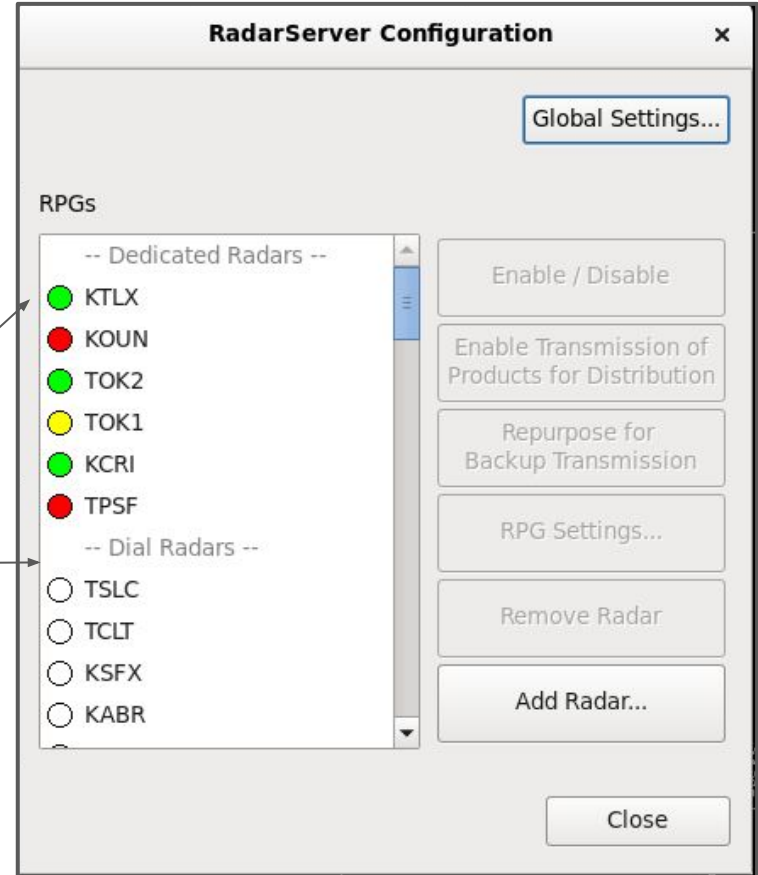
It is possible to disable your own dedicated radar, so please follow the instructions carefully.

# Accessing the RadarServer Configuration on AWIPS

- AWIPS Radar Menu > RadarServer Configuration

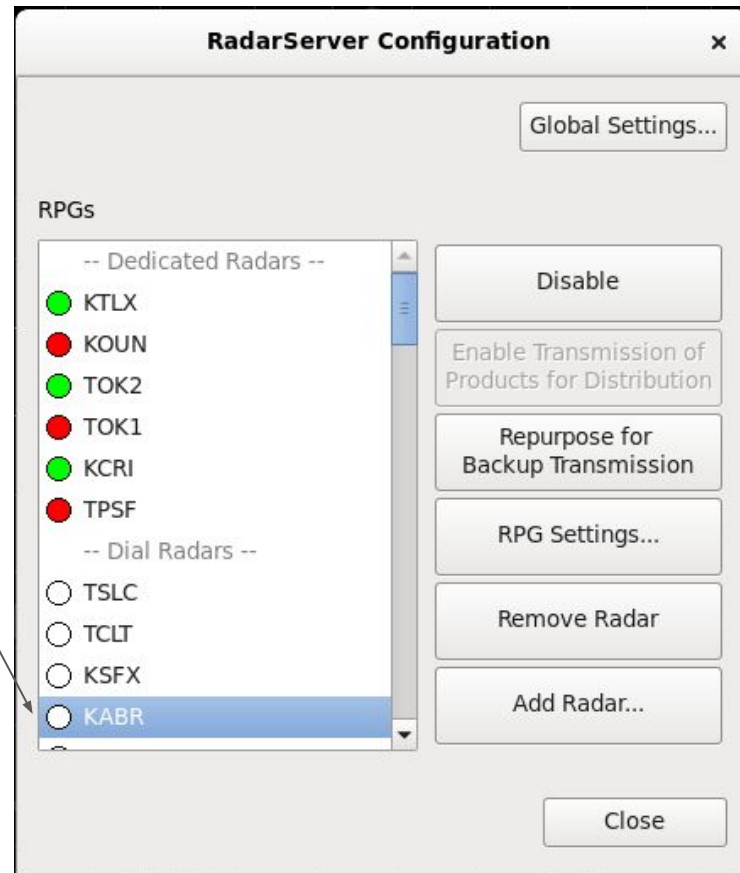
Dedicated Radars

Dial Radars



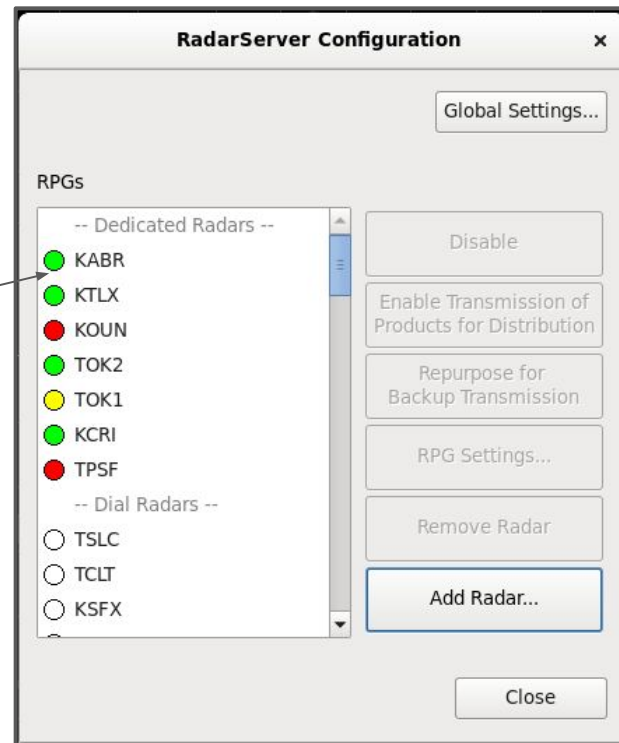
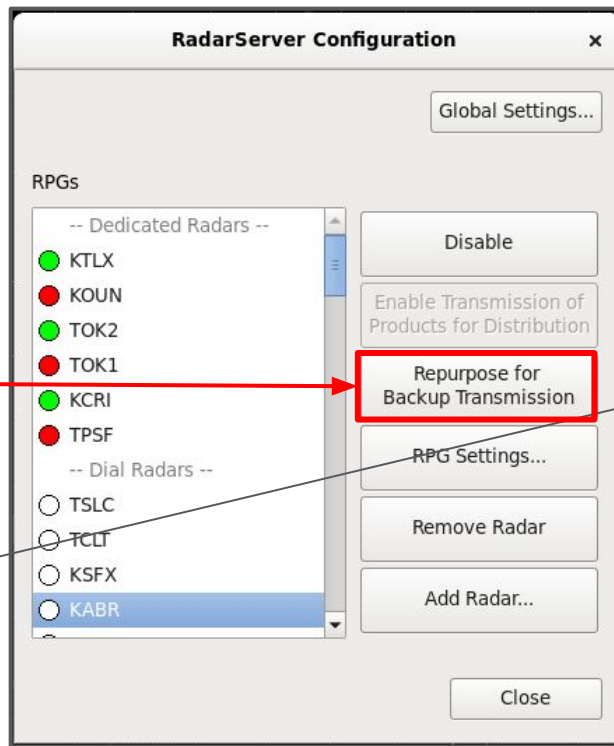
# Select Backup Radar and Repurpose for Dedicated Access

- From the Dial Radar List, select the radar you are providing backup for
- Line 29 access is first come, first served and if in use, will be unavailable for additional access
- The WSR SCLXXX product will show which AWIPS is connected to Line 29

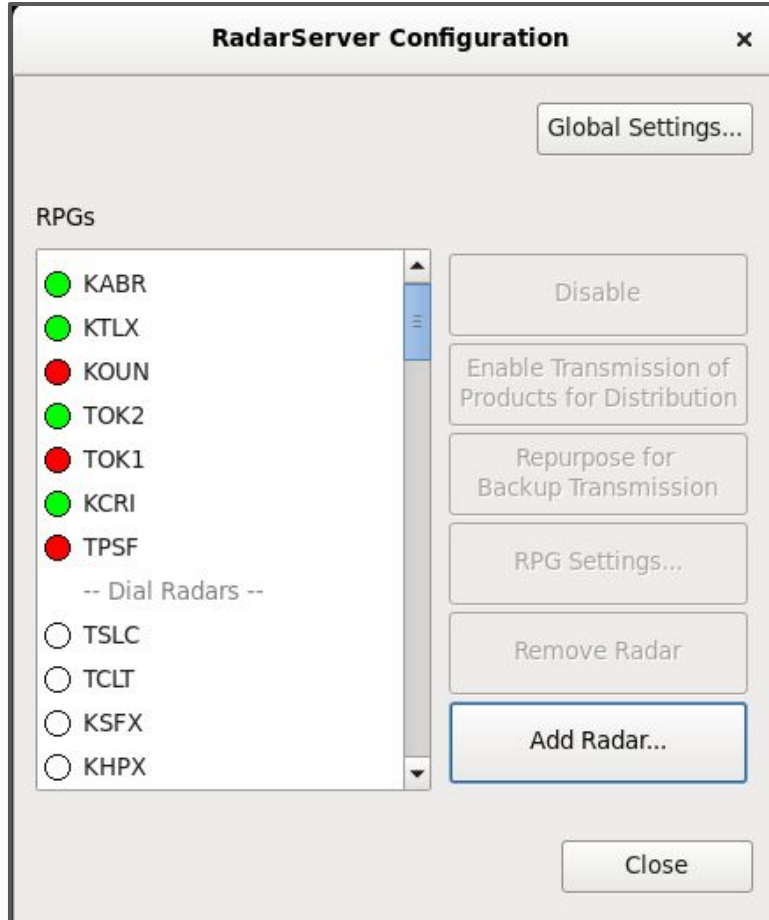


# Repurpose for Backup Transmission

- Once the backup radar is selected/highlighted
- Choose the 'Repurpose for Backup Transmission'
- Note the backup radar site moves up into the Dedicated Radars column



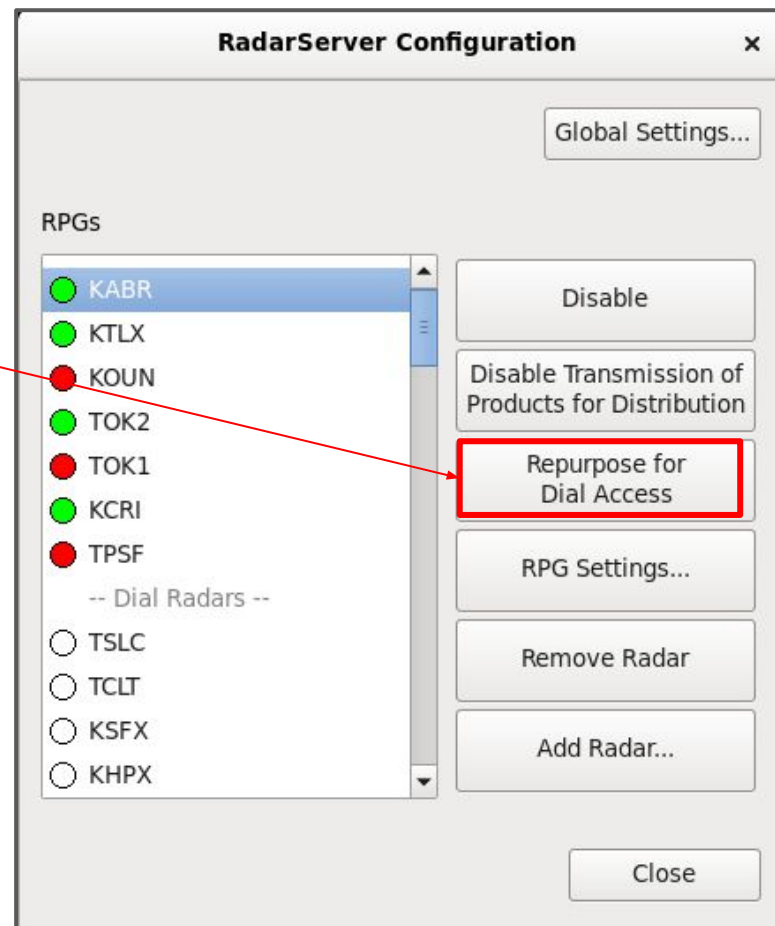
# Window Updates and the Line is Configured



This is what the window should look like when using dedicated line 29 to receive and send radar products from the backup radar site

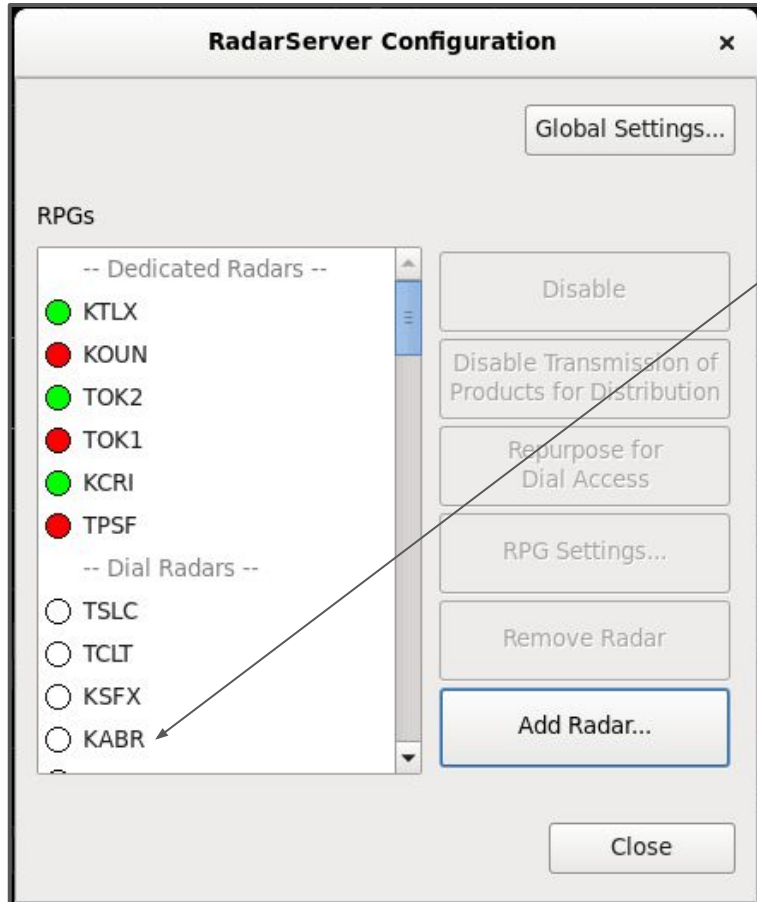
# To End Line 29 Dedicated Backup:

- Note: Line 29 is not intended to be used on a full-time basis
- Make sure the radar is still selected
- Click on 'Repurpose for Dial Access'





# Finished - All Steps Have Been Completed



The radar moves down to the 'Dial Radars' section and the settings have returned to normal.



# Reference Guide - Radar Backup Instructions for a Primary/Secondary Backup Site

Intended for backup situations (routine or emergency), of another WFO that has a failure, and are unable to obtain or transmit their own radar data for central collection and distribution via the SBN. The requested site's RPG and AWIPS WAN must be operational.

## To start data transmission:

On AWIPS CAVE session:

- Select '**Radar**'
- Select '**RadarServer Configuration**'

Under RPG's:

- Choose the radar you want data from in the Dial Radars list
- On the right hand side select '**Repurpose for Backup Transmission**'. (connection starts)

*The configuration is now complete.*

## To end data transmission:

Caution: It is possible to disable your own dedicated radar, so please follow the instructions carefully.

In the RadarServer Configuration window:

Under RPG's:

- Select the radar from the Dedicated Radars list
- Select the "**Repurpose for Dial Access**" button on the right side of the window

*The connection closes and the radar moves down to the 'Dial Radars' section of the RPG's box.*